

## E32 Fused Diagnostic Cap Modification

June 28, 2018

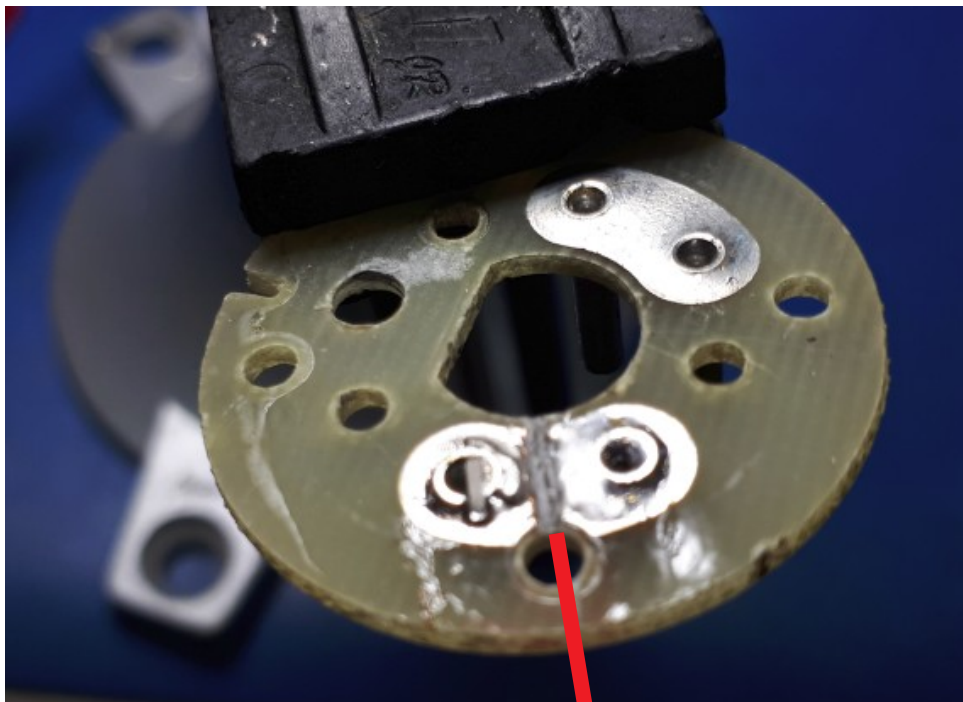
E32FAN

1. Here is the Diagnostic cap, in original condition.

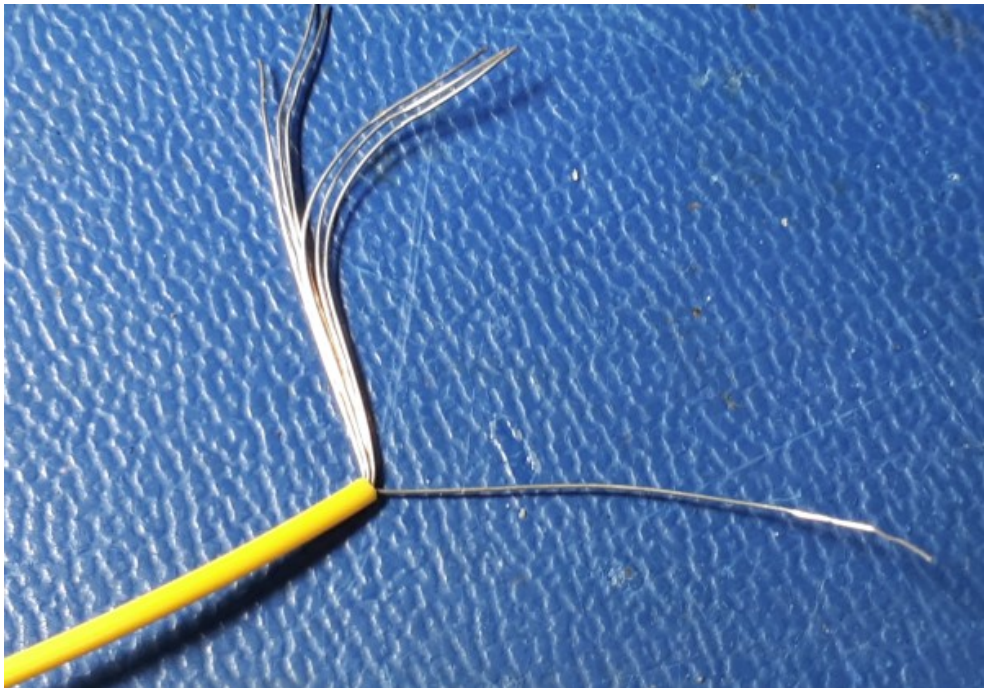


2. Cut or melt off the 4 plastic studs. Remove the circuit board.

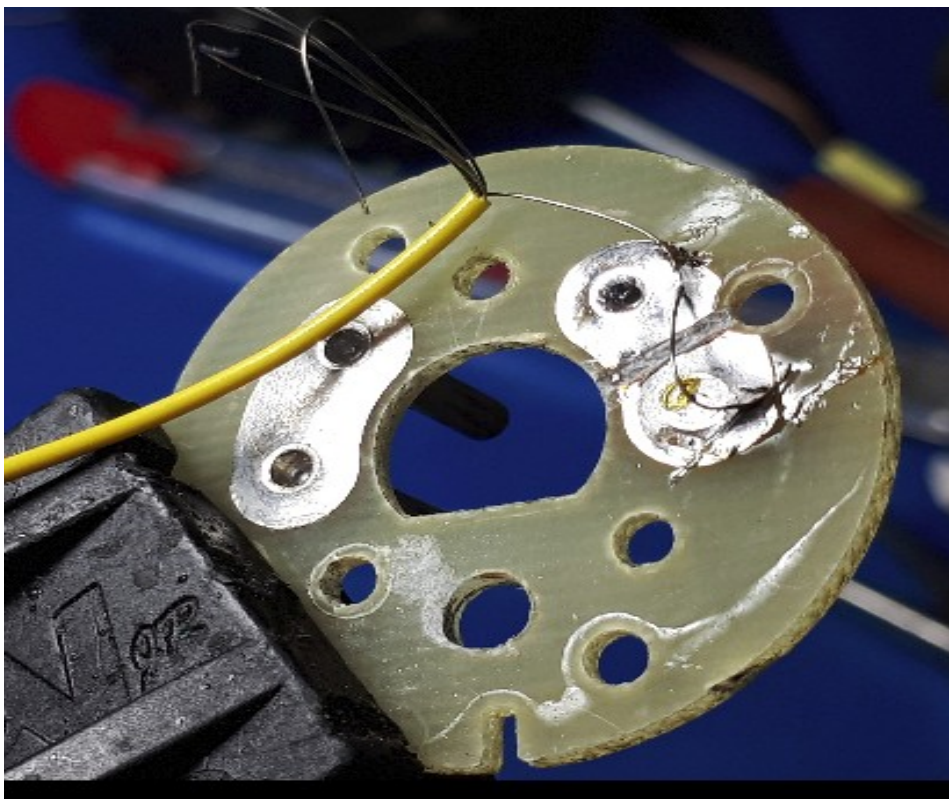
3. Cut or saw a groove in the copper trace between pins 14 and 15 as shown. Now the 2 pins are isolated electrically.



4. Separate one strand of a multi-strand wire. This will be the 5 amp fuse. Mine measures 0.006" (0.13mm).



5. Solder a piece of this very thin wire across the cut groove.



6. Drill a hole through the circuit board and the cap top. Insert a #4-40 x 3/4" (M3 x 20) machine screw.



7. Secure the screw with a hex nut and lockwasher.

8. Now your Diagnostic Cap is fused!

